

Setting Up Chinese Language Support in Windows 2000

1. Open "control panel" by double clicking "My Computer" or choose "Control Panel" from Start of the toolbar. Click "Regional options". (Figure 1)

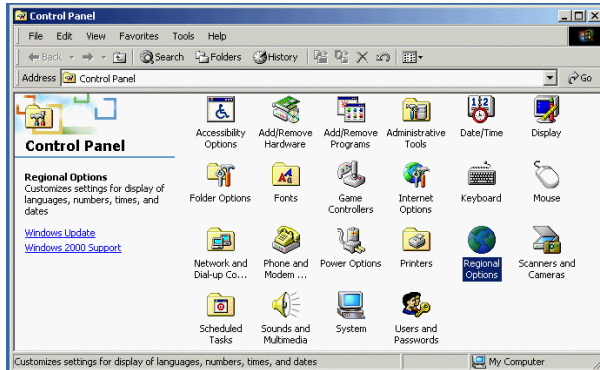


Figure 1

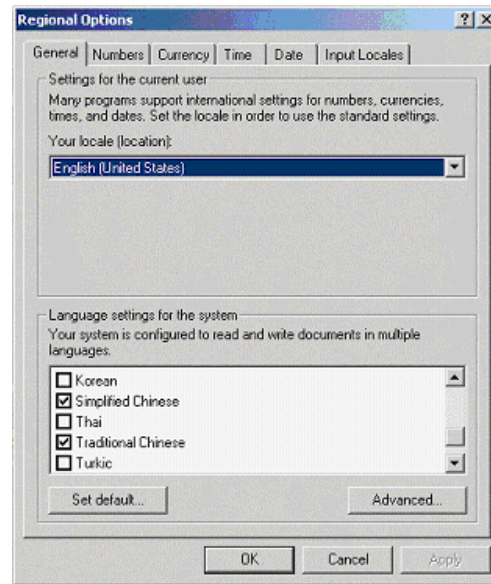


Figure 2

2. To display Chinese characters properly on your computer, language supporting components such as "Traditional Chinese" and/or "Simplified Chinese" must be installed. Shown in figure 2 above, selected boxes are already installed language supports. If not "checked", select it and Click OK to install. You computer may ask you for Windows 2000 Multi-Language CD.
3. After installation, a reboot may be required. Go to next step.
4. Open "Control Panel" and click "Regional Options" again. Select "Input locales". Click "Add" to bring up "Add Input Locale".
5. In the drop down list of "Input locale", select Chinese (Taiwan). In the drop down list of Keyboard layout/IME, select Chinese (traditional)-"New Phonetic" or other IMEs as desired. Click OK to commit.

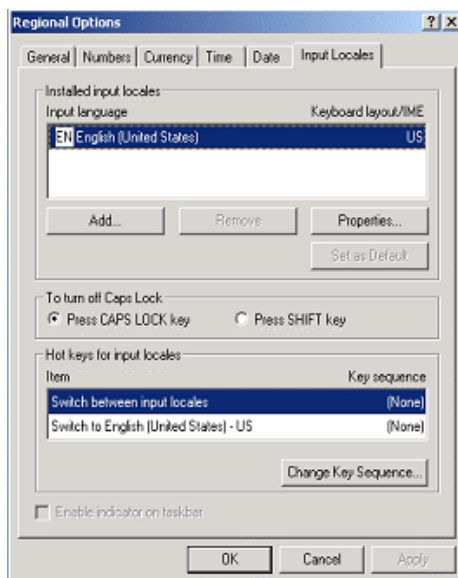


Figure 3

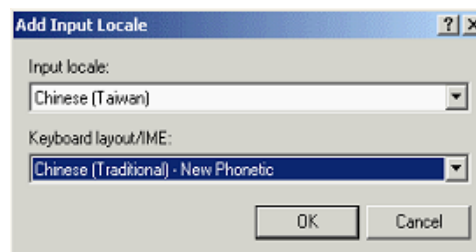


Figure 4

- In the Regional Options dialog, Added input locale should show up in the input language box. Click that newly added IME and Apply to activate it.

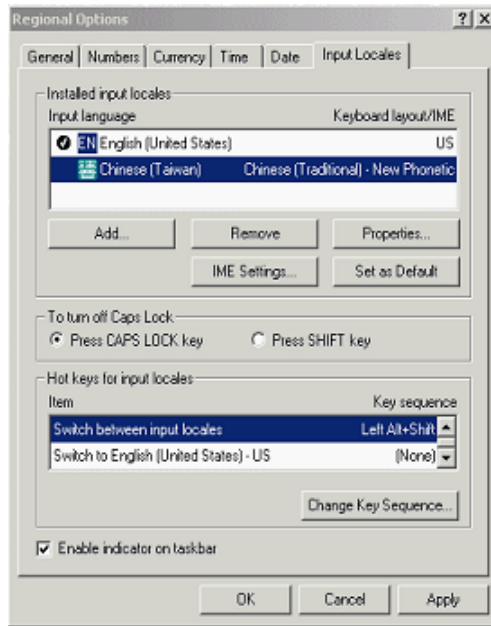


Figure 5

- Click "IME settings" (shown above) to select one of the keyboard mappings you like. The options may be different from those in IE5.5.

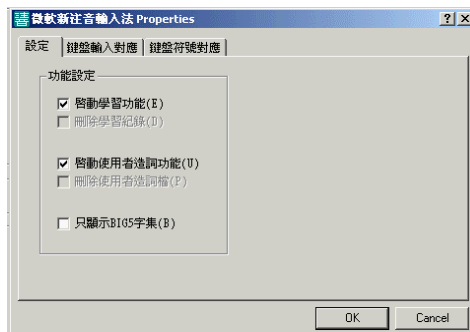


Figure 6

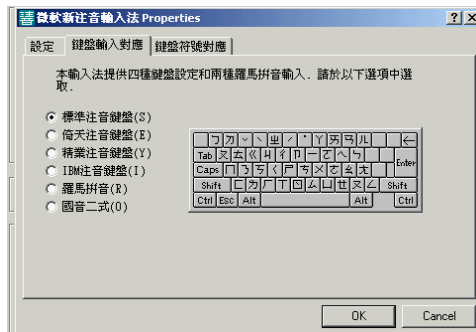


Figure 7

- Repeat the same procedures to install "MS-PinYin98" of simplified Chinese (PRC).

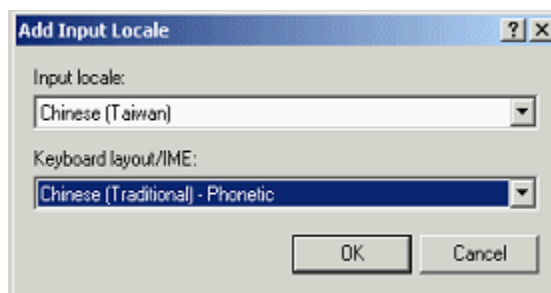


Figure 8

- Click "OK" to close Regional Options Dialog.
- A small icon "EN" will appear in right lower corner of the tool bar. (see next page)

