

## Setting Up Chinese Language Support in Windows 98/Me

Download the following programs from

<http://www.microsoft.com/windows/ie/downloads/recommended/ime/default.asp>

TCMONDO.EXE: traditional Chinese support + IME. (for Office 2000 only)  
SCMONDO.EXE: simplified Chinese support + IME. (for Office 2000 only)

Imecht.exe and ie.zht.exe: traditional Chinese support + IME (for Office XP)  
Imechs.exe and ie.zhc.exe: simplified Chinese support + IME (for Office XP)

**After installation, Windows 9x can read and write Chinese in Word 2000, Office XP, IE and Outlook 5.0 and up. They also support most third party Chinese fonts.**

1. Upon opening one of the above programs, a small icon "EN" will appear on the right lower corner of the tool bar
2. Left-click the icon to select an IME for Chinese writing, and right-click to change its settings.

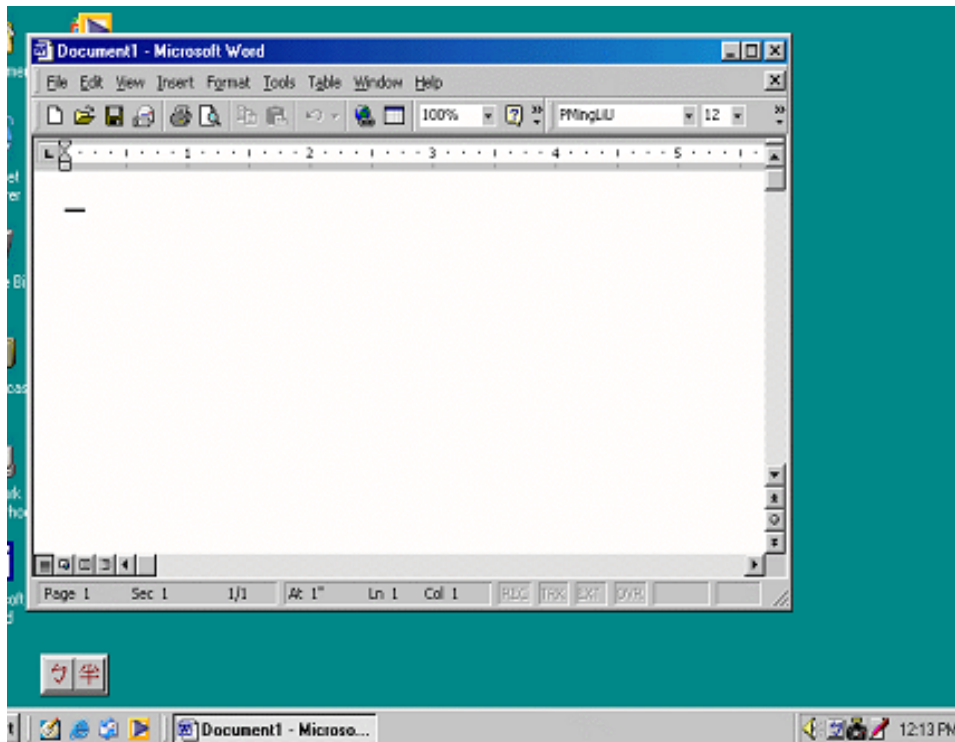


Figure 1

3. Left-click the notepad icon to bring up or close the "Soft Keyboard".
4. Right-click the notepad icon to bring up keyboard mappings
5. Left-click 勺 icon, left to the notepad icon, to bring up a submenu for English or other IME.



Figure 2- 倚天 Eten Keyboard Mapping



Figure 3- Standard Keyboard Mapping