

Setting Up Chinese Language Support in Windows XP

1. Open "control panel" by double clicking "My Computer" or choose "Control Panel" from "Start" on the toolbar below.
2. For Category View (Figure 1), Select "Date, Time, Languages and Regional options" and then "Add Other Languages".
For Classic View, (Figure 2), Select "Regional and Language Options".

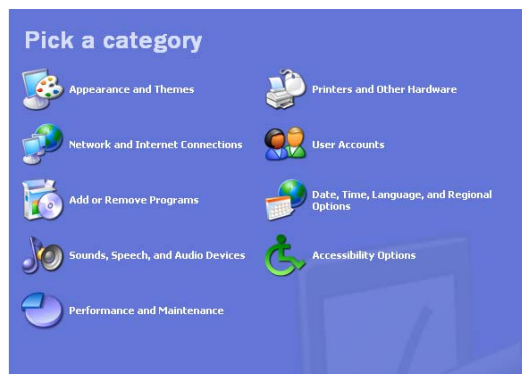


Figure 1



Figure 2

3. You will see the "Regional and Language Options" dialog (Figure 3). Select "Language" will bring up another dialog (Figure 4).

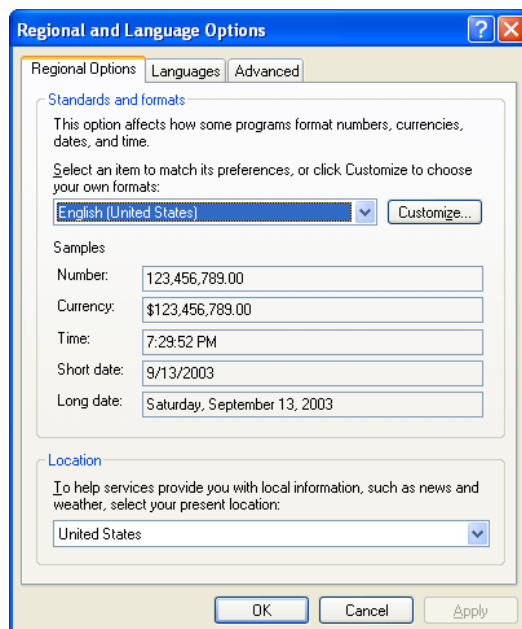


Figure 3

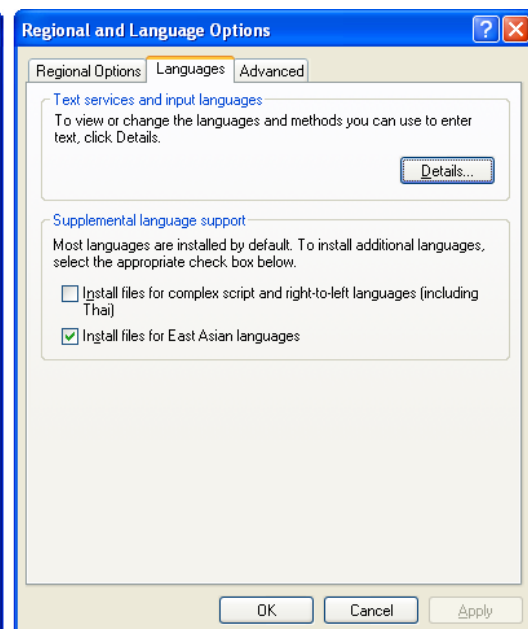


Figure 4

4. Under "Supplemental Language Support", make sure "Install files for East Asian Languages" is checked (Figure 4). It is the basic requirement to display Chinese, Japanese or Korean characters properly on your system. If not yet installed, select it and click "OK" to proceed with the installation. The system may prompt you for the Windows XP CD. Repeat steps 1,2,and 3 after the required system reboot.
5. Now, press the "**Detail**" button in "Text Service and input Language" group (Figure 4).

6. Click "Add" (Figure 5).

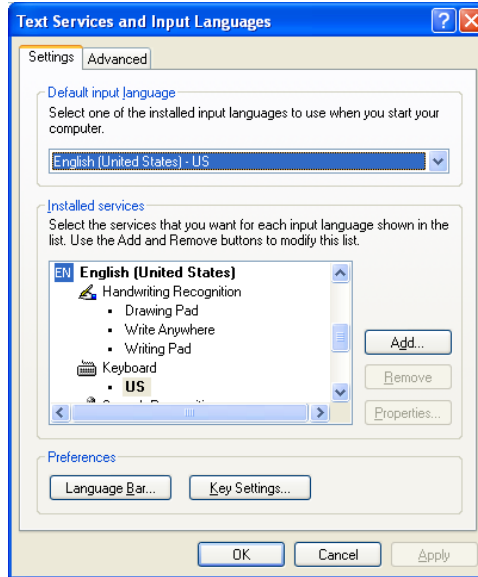


Figure 5

7. Select Chinese (Taiwan) from the drop-down list of "Input language" (Figure 6).

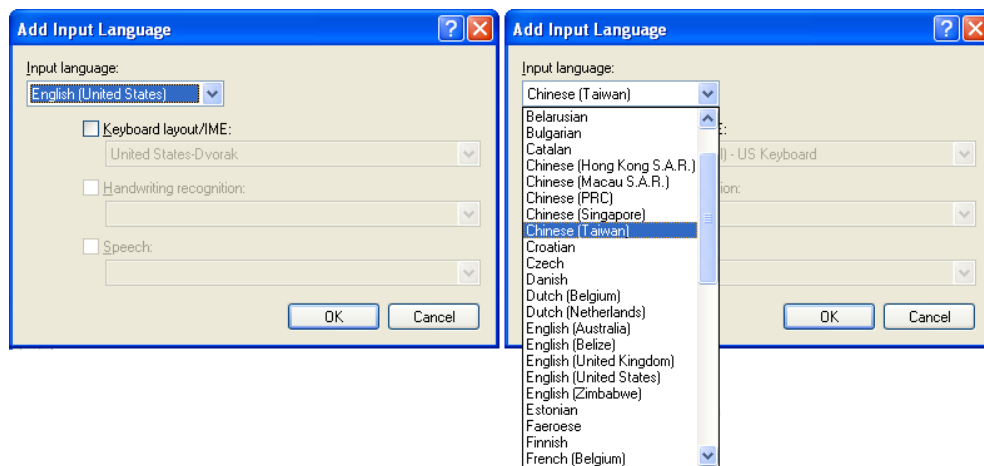


Figure 6

8. Check "Keyboard Layout/IME" and select "Chinese (Traditional) New Phonetic" "Chinese (Taiwan)" from the drop-down list (Figure 7).

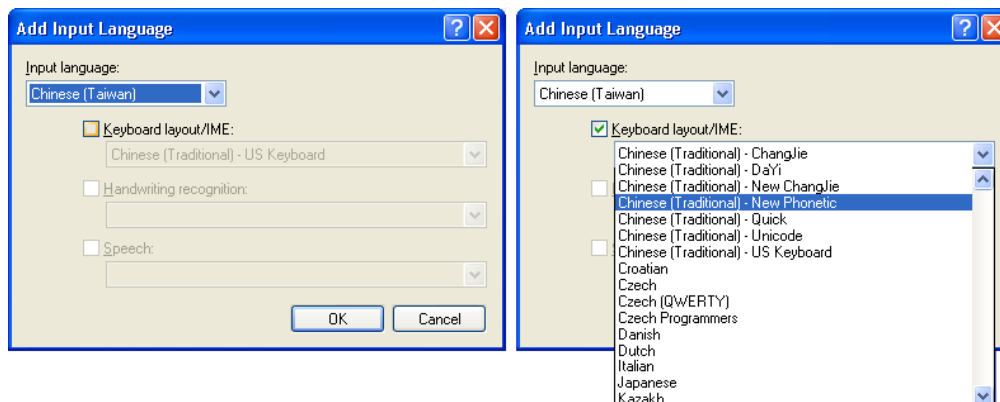


Figure 7

- At this point, "Chinese (Traditional) New Phonetic" should be listed as shown below. You must press "Apply" button now to activate it.



Figure 8

- After activated, while "Chinese (Traditional) New Phonetic" remains highlighted, Press "Properties" button for keyboard mapping setups as shown below. Select "OK" to commit and return to "Text Service" Dialog.

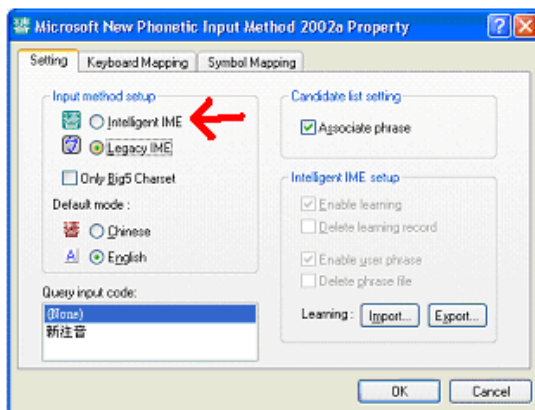


Figure 9

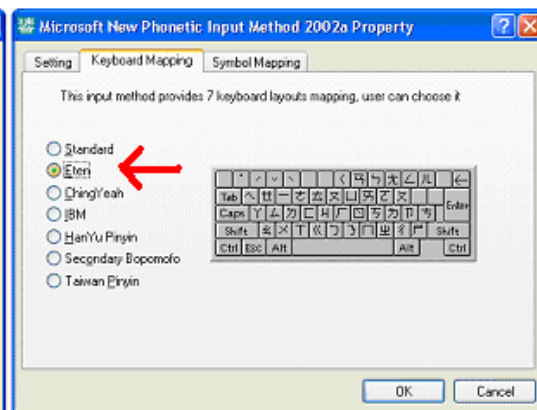


Figure 10



Figure 11 - 倚天 Eten Keyboard Mapping



Figure 12 - Standard Keyboard Mapping

11. Click "Language Bar", check the options as desired. (shown below)

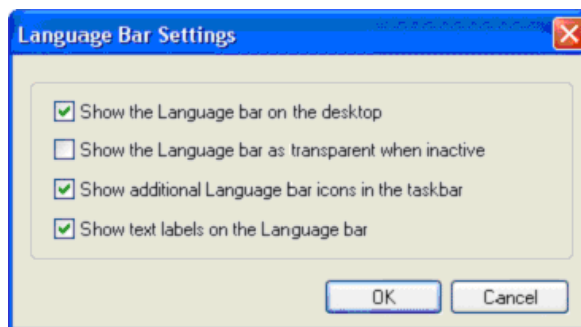


Figure 13

12. At this point, you have completed the basic setup required for your computer to displaying and writing Chinese characters. Click OK to close the set up.

13. Repeat the above steps to install Microsoft Pinyin IME 3.0 of Chinese (PRC).

Return to Windows XP desktop:

14. A small icon "EN" will now show up on the lower right corner of toolbar. Left click it to select desired Input Method Environment (IME). The "Language Bar" can be "Restored" as a floating toolbar as shown below.

15. Left-click CH or EN icon to bring up a submenu for English or other IME.

16. Right-click CH or EN icon to bring up another menu for language bar settings.

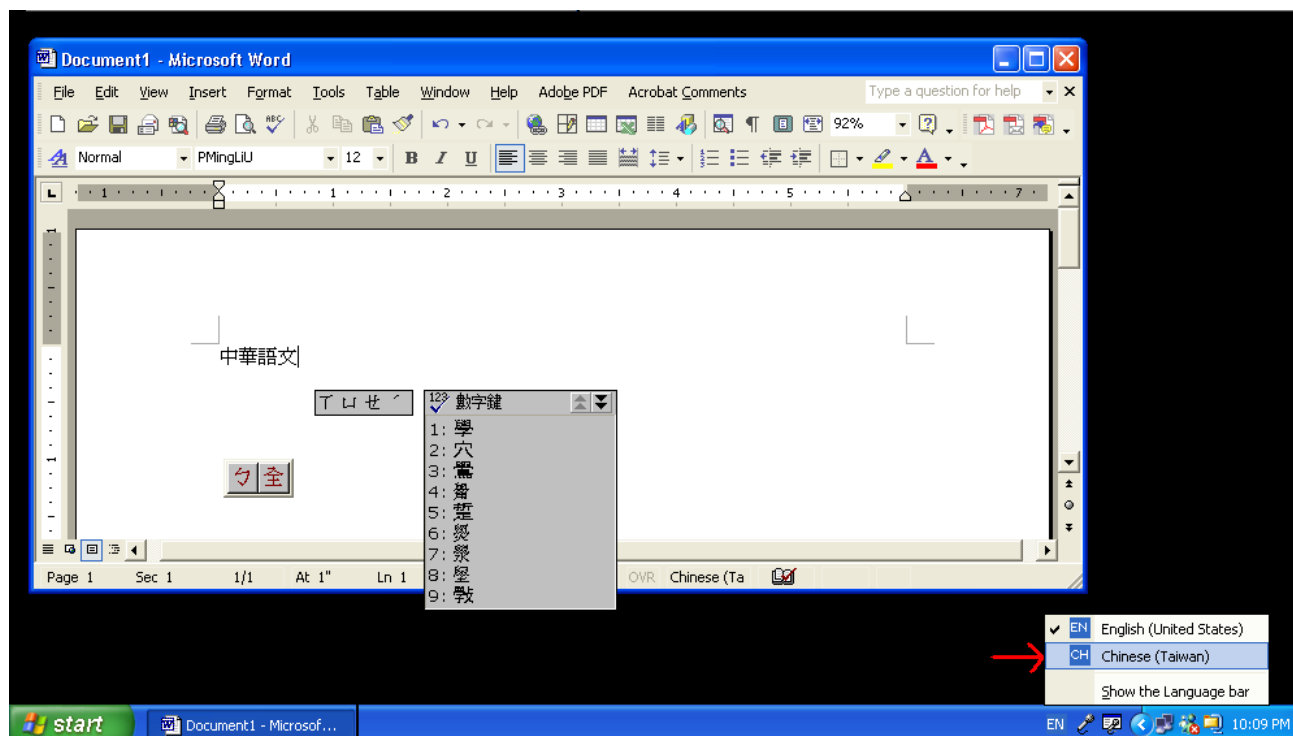


Figure 14

Tips/features with Office XP:

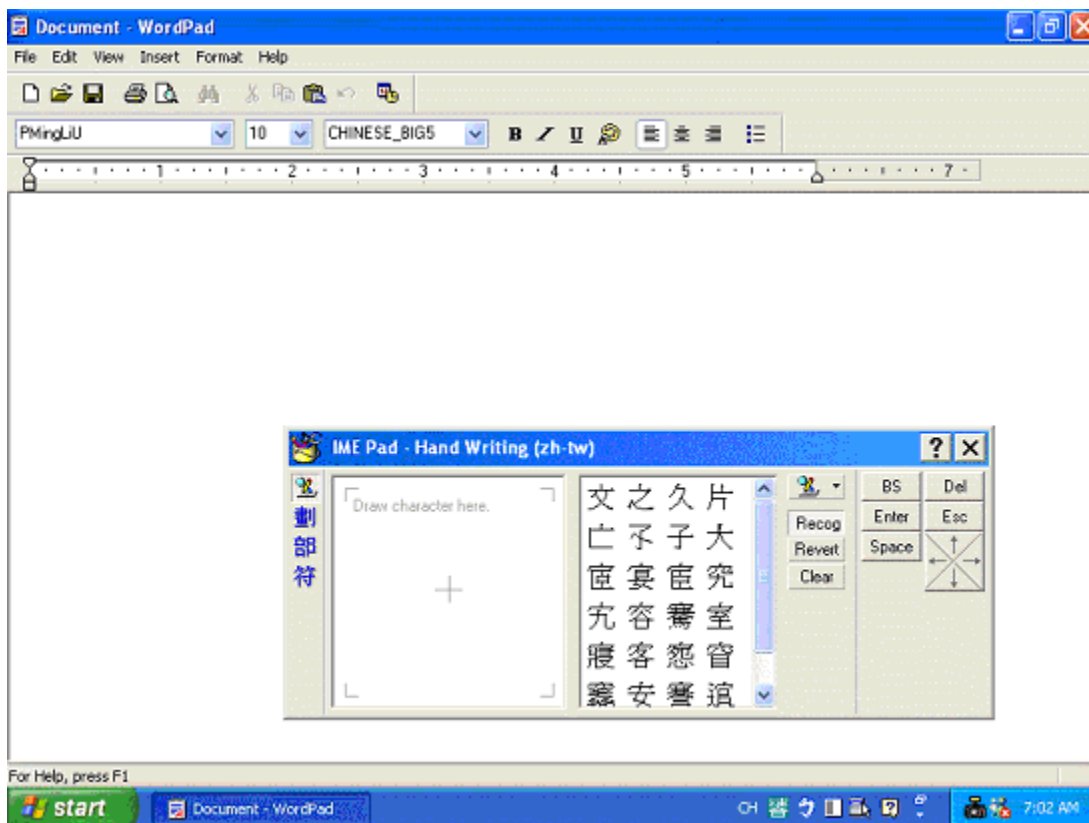


Figure 15

17. When using "New Phonetic IME", left-click the icon (tools) left to **?** KEY to bring up a submenu for "Soft Keyboard" and "IME Pad". Use mouse to write Chinese on the IME pad. Click the Chinese character on the list for completion.
18. When using "Phonetic IME", right-click "勺" to bring up a submenu for "Soft Keyboard".
19. The "Soft Keyboard" is based on your choice of keyboard mappings.
20. Click 簡 on the language bar for conversion to 繁. Microsoft Pinyin IME 3.0 can input traditional Chinese Characters.